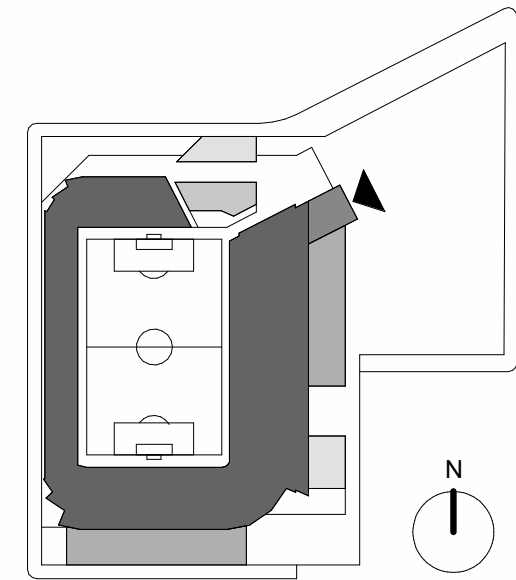
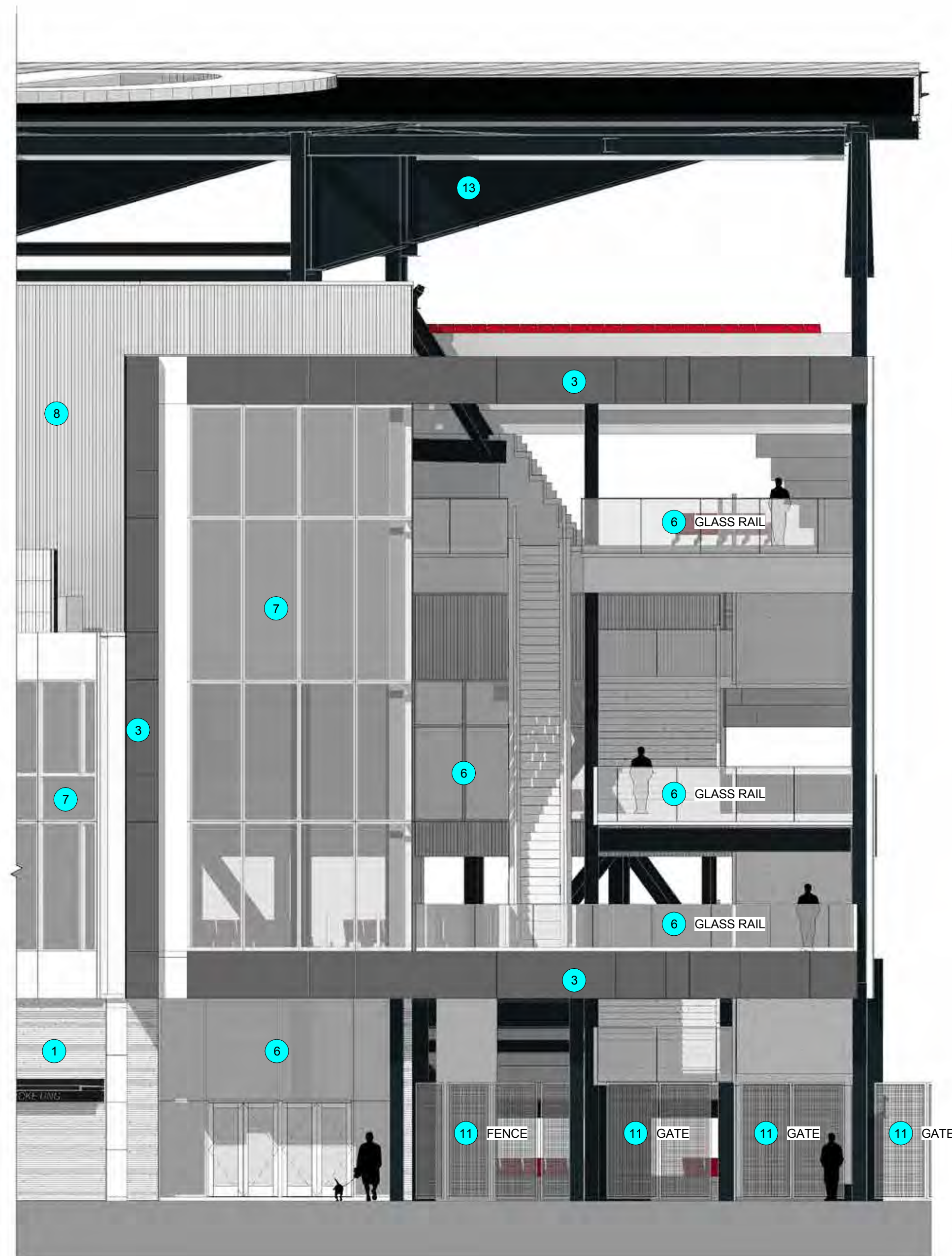


- 1 FORM LINER CIP CONCRETE - WOOD PLANK TEXTURE
- 2 CIP CONCRETE - SMOOTH TEXTURE EXPOSED CONE TIES
- 3 GLASS FIBER REINFORCED CONCRETE PANEL - TYPE 1
- 4 GLASS FIBER REINFORCED CONCRETE PANEL - TYPE 2
- 5 GLASS FIBER REINFORCED CONCRETE PANEL - TYPE 3
- 6 ALUMINUM STOREFRONT W / VISION GLASS
- 7 ALUMINUM CURTAIN WALL W / VISION GLASS
- 8 MP1 CORRUGATED METAL PANEL NATURAL ZINC
- 9 MP2 FLAT INTERLOCKING METAL PANEL NATURAL ZINC
- 10 MP3 CORRUGATED PERFORATED METAL PANEL NATURAL ZINC
- 11 MP4 METAL MESH FENCE @ ENTRY GATES
- 12 MP5 PERFORATED MILL ALUMINUM METAL PANEL - FENCE / SCREEN WALL
- 13 MP6 PANTED STEEL - ENTRY CANOPY, ORIEL WINDOW DISPLAYS, FENCE POSTS, STADIUM STRUCTURAL SUPPORT, MAIN HIGH ROOF CANOPY POLYCARBONATE ROOFING
- 14 POLYCARBONATE ROOFING
- 15 SIGNAGE, BRANDING, LOGOS + SPONSOR



**EXTERIOR MATERIALS SIZES AND ORIENTATION ARE AT SCHEMATIC DESIGN LEVEL, PANEL SIZE AND ORIENTATION MAY CHANGE FOR CONSTRUCTABILITY AND PROGRESS IN DESIGN**



1 NE CORNER STAIR AND ENTRY  
1/8" = 1'-0"



ENTRY TOWER PLAZA VIEW LOOKING WEST

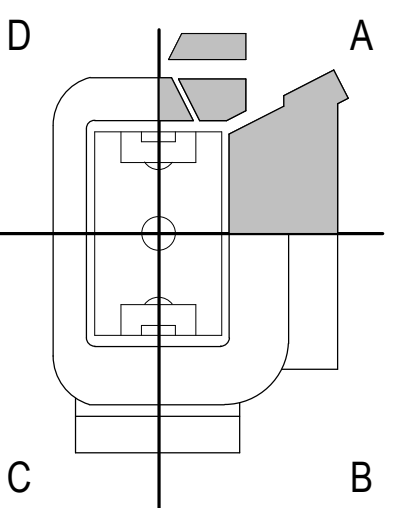
**POPULOUS**  
Marshall | Moya Design



DC UNITED SOCCER STADIUM

100 Potomac Avenue, SW  
Washington, DC 20024

100% PUD SUBMISSION

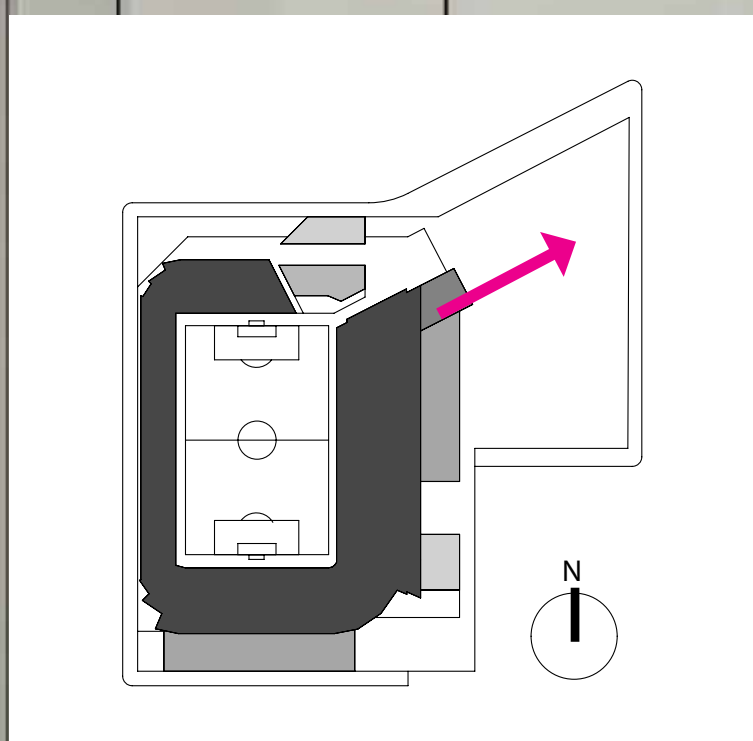


AREA A - ELEVATIONS & DETAILS

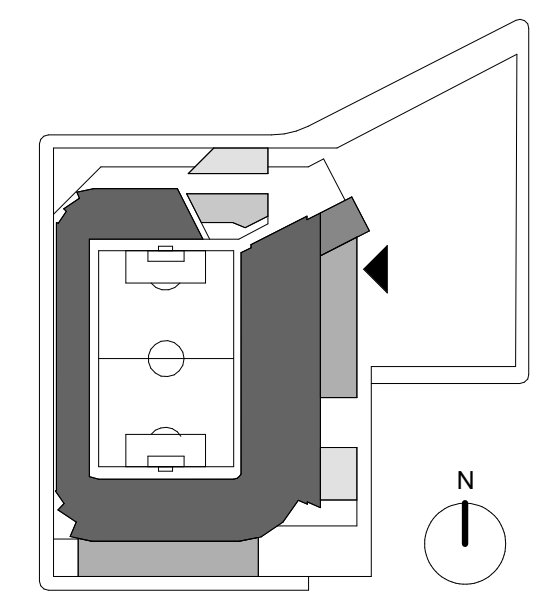
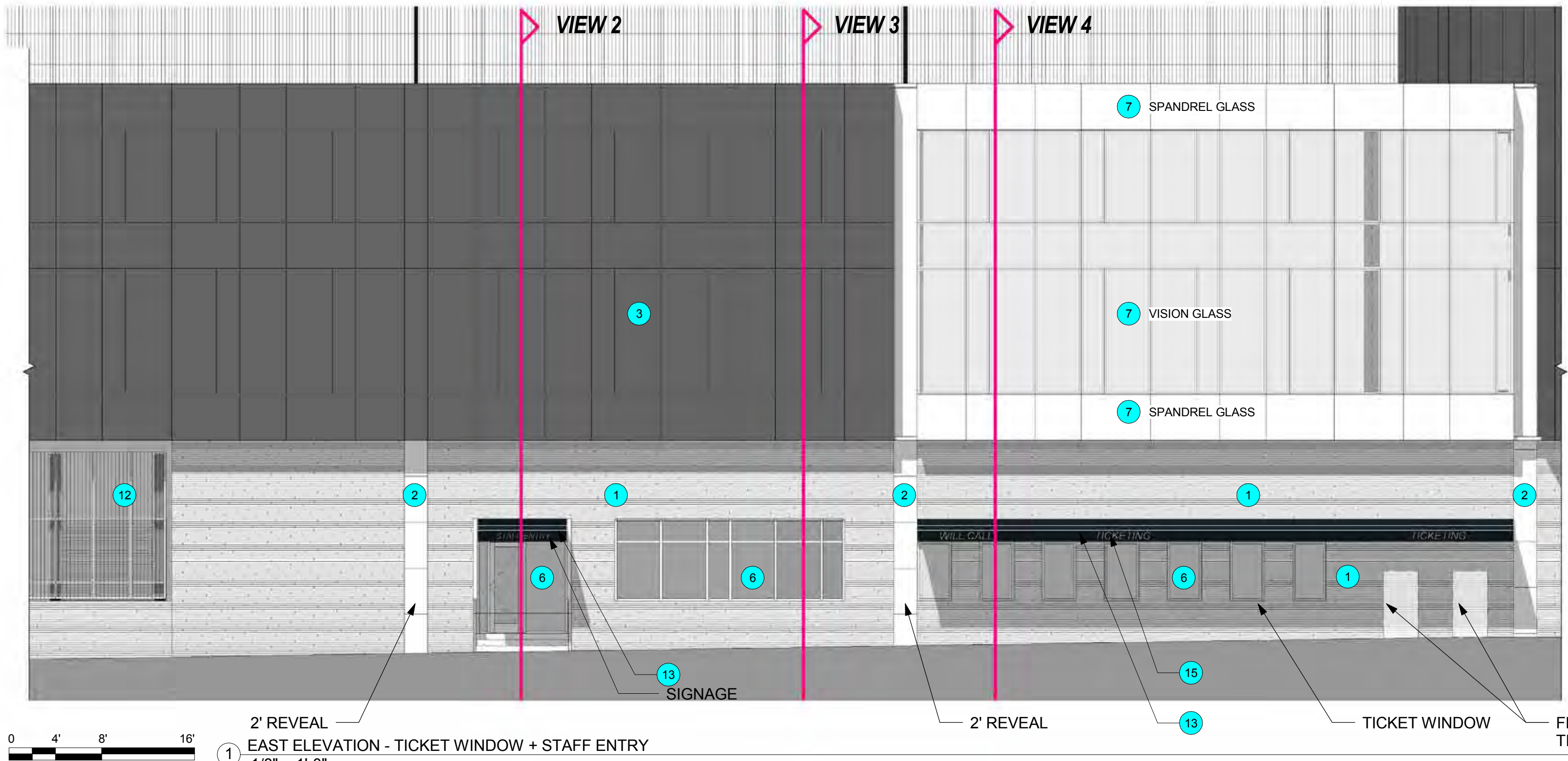




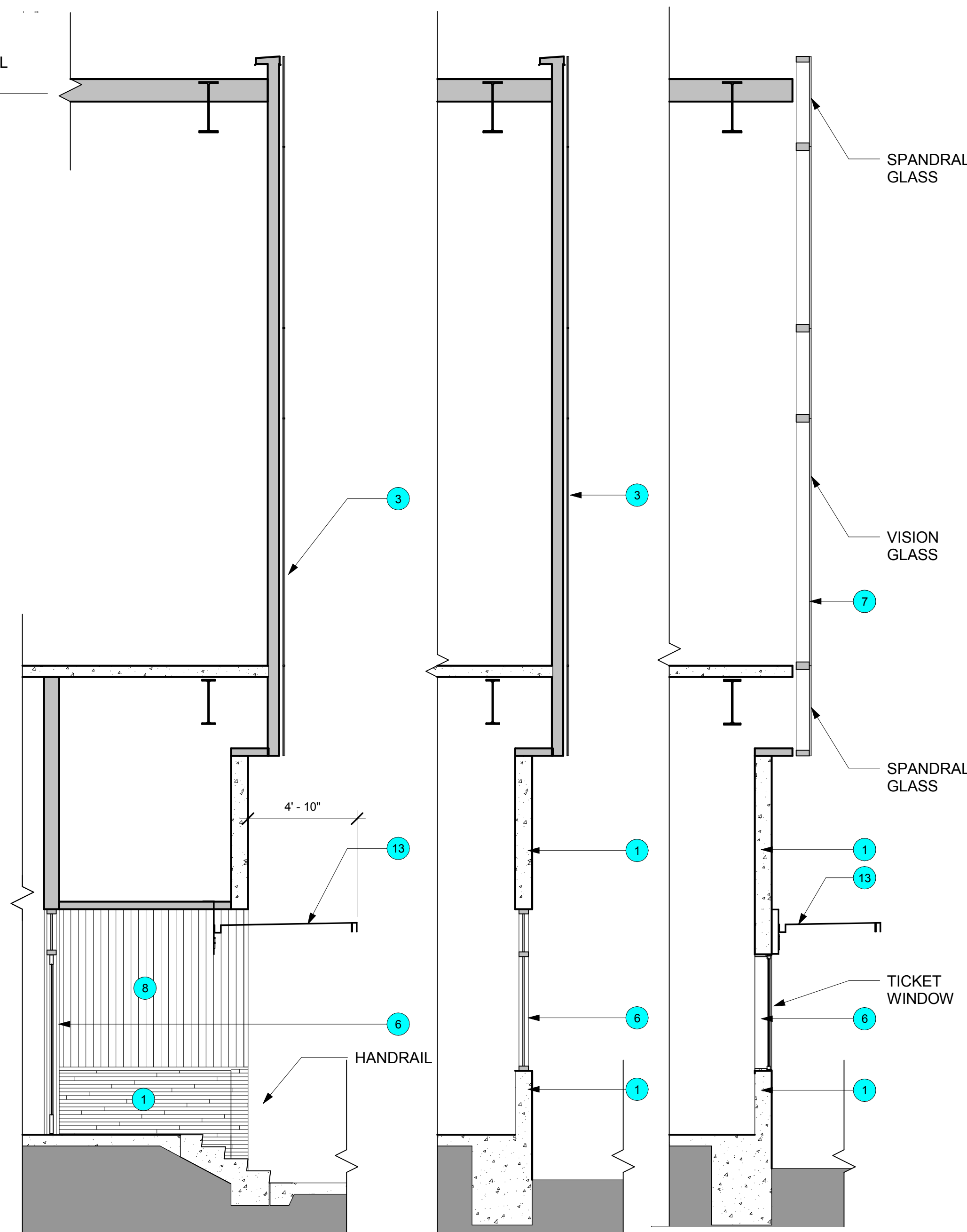
**INTERIOR OF ENTRY TOWER LOOKING AT PLAZA AND POTOMAC AVE.**







- 1 FORM LINER CIP CONCRETE - WOOD PLANK TEXTURE
- 2 CIP CONCRETE - SMOOTH TEXTURE EXPOSED CONE TIES
- 3 GLASS FIBER REINFORCED CONCRETE PANEL - TYPE 1
- 4 GLASS FIBER REINFORCED CONCRETE PANEL - TYPE 2
- 5 GLASS FIBER REINFORCED CONCRETE PANEL - TYPE 3
- 6 ALUMINUM STOREFRONT W / VISION GLASS
- 7 ALUMINUM CURTAIN WALL W / VISION GLASS
- 8 MP1 CORRUGATED METAL PANEL NATURAL ZINC
- 9 MP2 FLAT INTERLOCKING METAL PANEL NATURAL ZINC
- 10 MP3 CORRUGATED PERFORATED METAL PANEL NATURAL ZINC
- 11 MP4 METAL MESH FENCE @ ENTRY GATES
- 12 MP5 PERFORATED MILL ALUMINUM METAL PANEL - FENCE / SCREEN WALL
- 13 MP6 PANTED STEEL - ENTRY CANOPY, ORIEL WINDOW DISPLAYS, FENCE POSTS, STADIUM STRUCTURAL SUPPORT, MAIN HIGH ROOF CANOPY
- 14 POLYCARBONATE ROOFING
- 15 SIGNAGE, BRANDING, LOGOS + SPONSOR

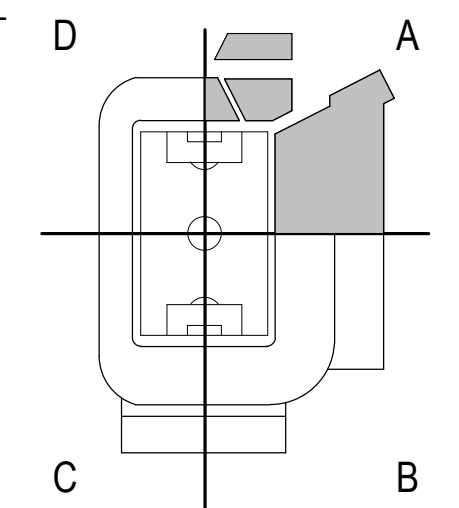


**POPULOUS**  
Marshall | Moya Design



DC UNITED SOCCER STADIUM  
100 Potomac Avenue, SW  
Washington, DC 20024

100% PUD SUBMISSION

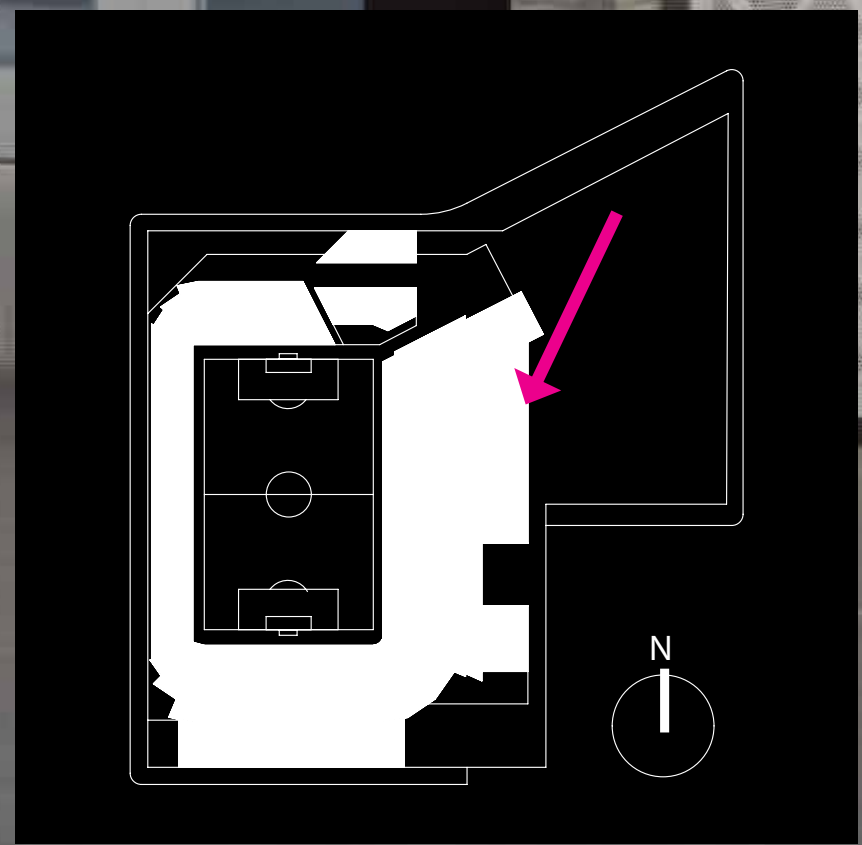


AREA A - ELEVATIONS & DETAILS

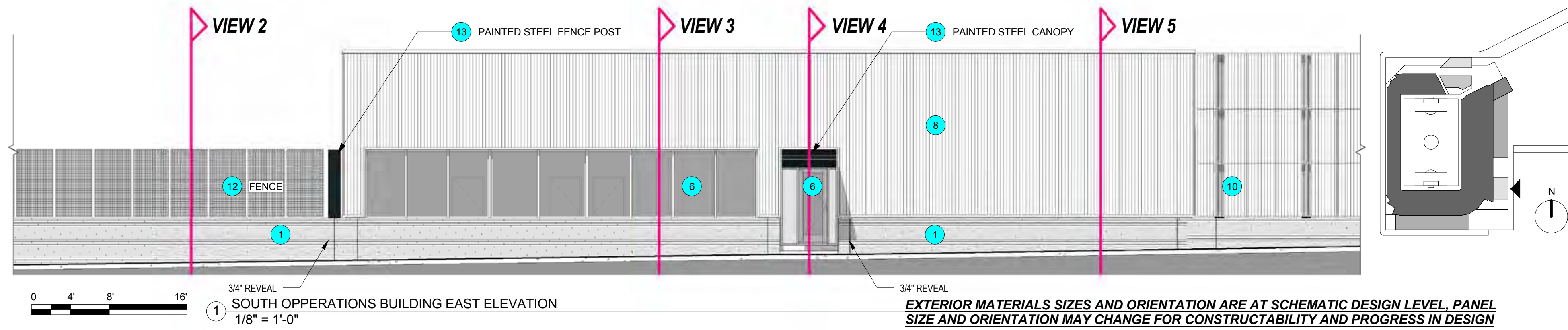




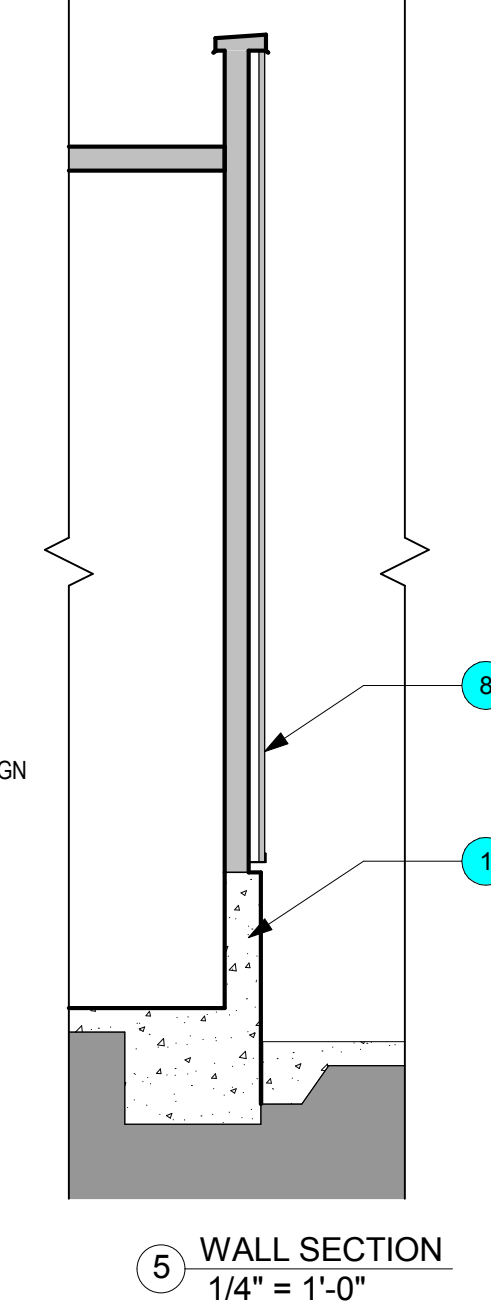
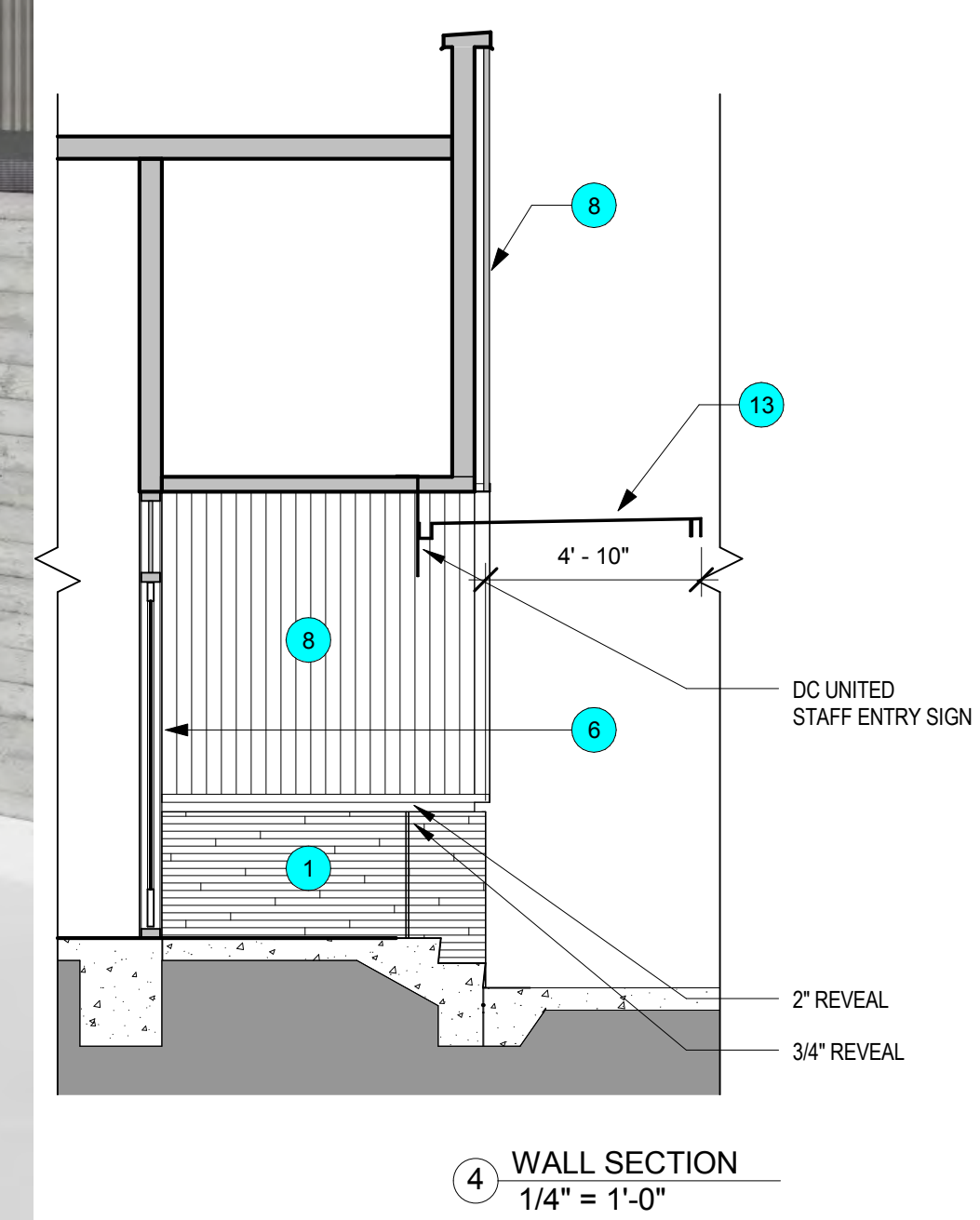
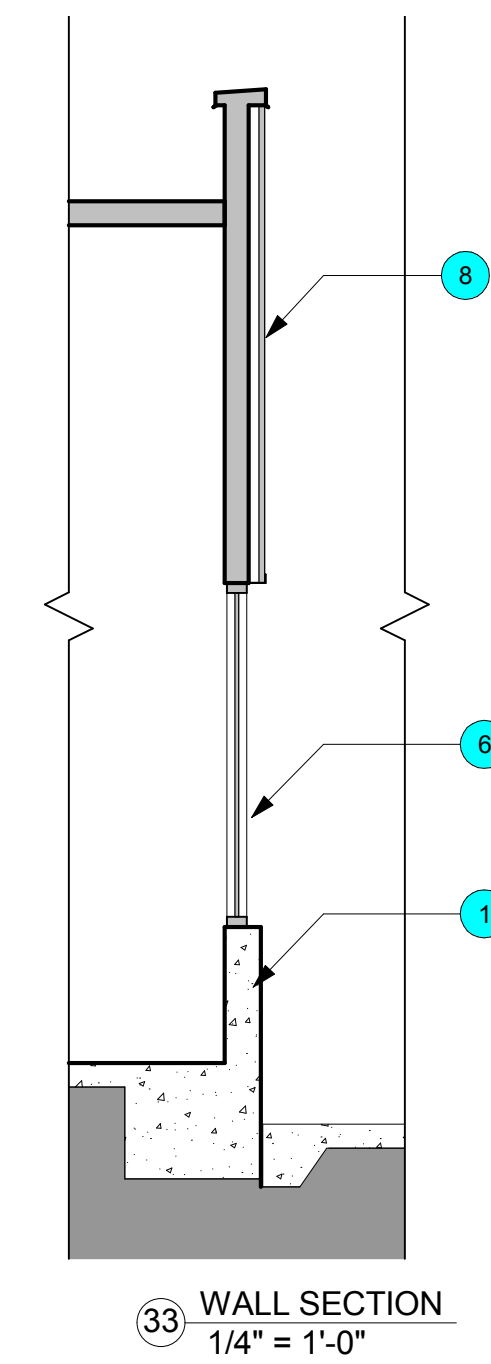
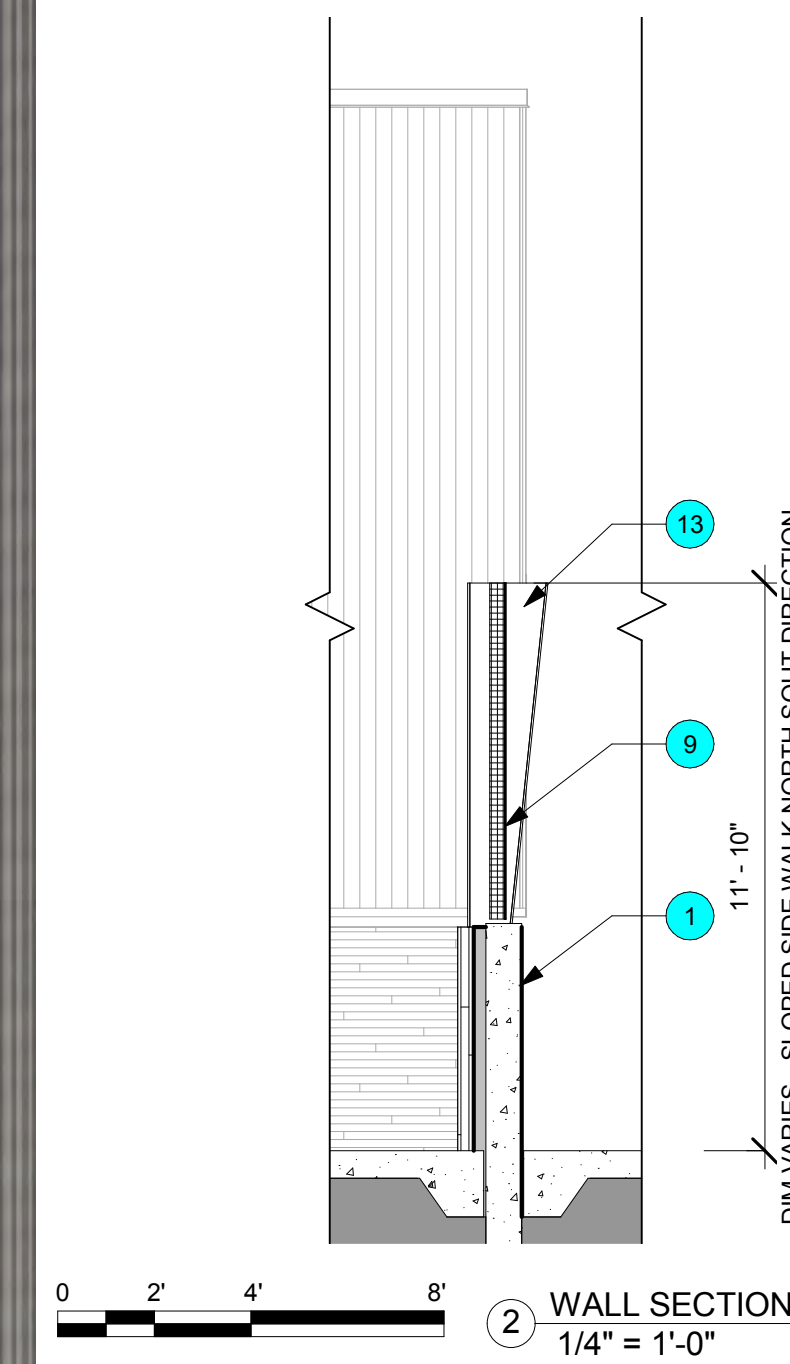
**EAST BUILDING ENTRY AND TICKETING VIEW LOOKING SOUTH**







- 1 FORM LINER CIP CONCRETE - WOOD PLANK TEXTURE
- 2 CIP CONCRETE - SMOOTH TEXTURE EXPOSED CONE TIES
- 3 GLASS FIBER REINFORCED CONCRETE PANEL - TYPE 1
- 4 GLASS FIBER REINFORCED CONCRETE PANEL - TYPE 2
- 5 GLASS FIBER REINFORCED CONCRETE PANEL - TYPE 3
- 6 ALUMINUM STOREFRONT W / VISION GLASS
- 7 ALUMINUM CURTAIN WALL W / VISION GLASS
- 8 MP1 CORRUGATED METAL PANEL NATURAL ZINC
- 9 MP2 FLAT INTERLOCKING METAL PANEL NATURAL ZINC
- 10 MP3 CORRUGATED PERFORATED METAL PANEL NATURAL ZINC
- 11 MP4 METAL MESH FENCE @ ENTRY GATES
- 12 MP5 PERFORATED MILL ALUMINUM METAL PANEL - FENCE / SCREEN WALL
- 13 MP6 PAINTED STEEL - ENTRY CANOPY, ORIEL WINDOW DISPLAYS, FENCE POSTS, STADIUM STRUCTURAL SUPPORT, MAIN HIGH ROOF CANOPY
- 14 POLYCARBONATE ROOFING
- 15 SIGNAGE, BRANDING, LOGOS + SPONSOR



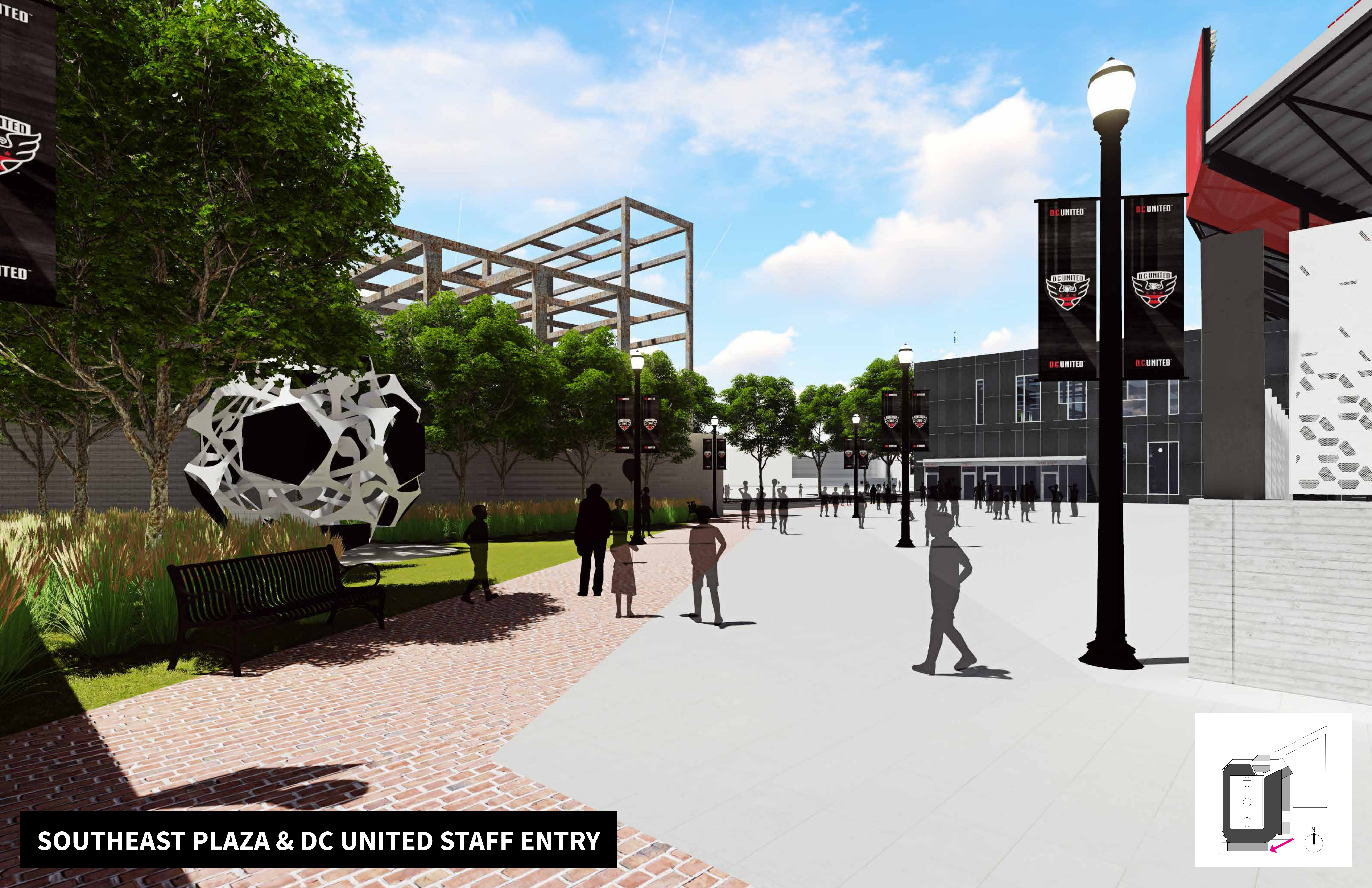
DC UNITED SOCCER STADIUM  
100 Potomac Avenue, SW  
Washington, DC 20024

100% PUD SUBMISSION

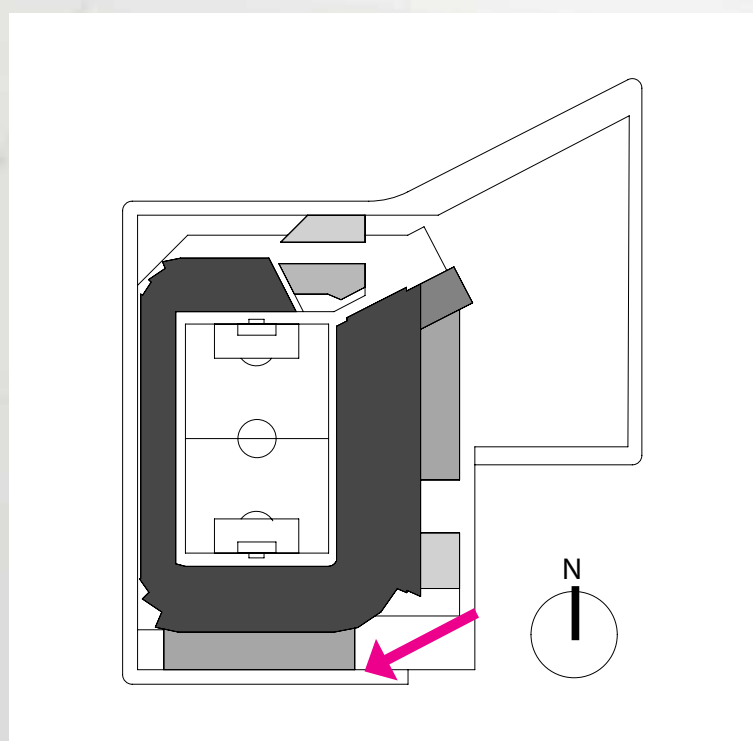
D A  
C B

AREA B - ELEVATIONS & DETAILS

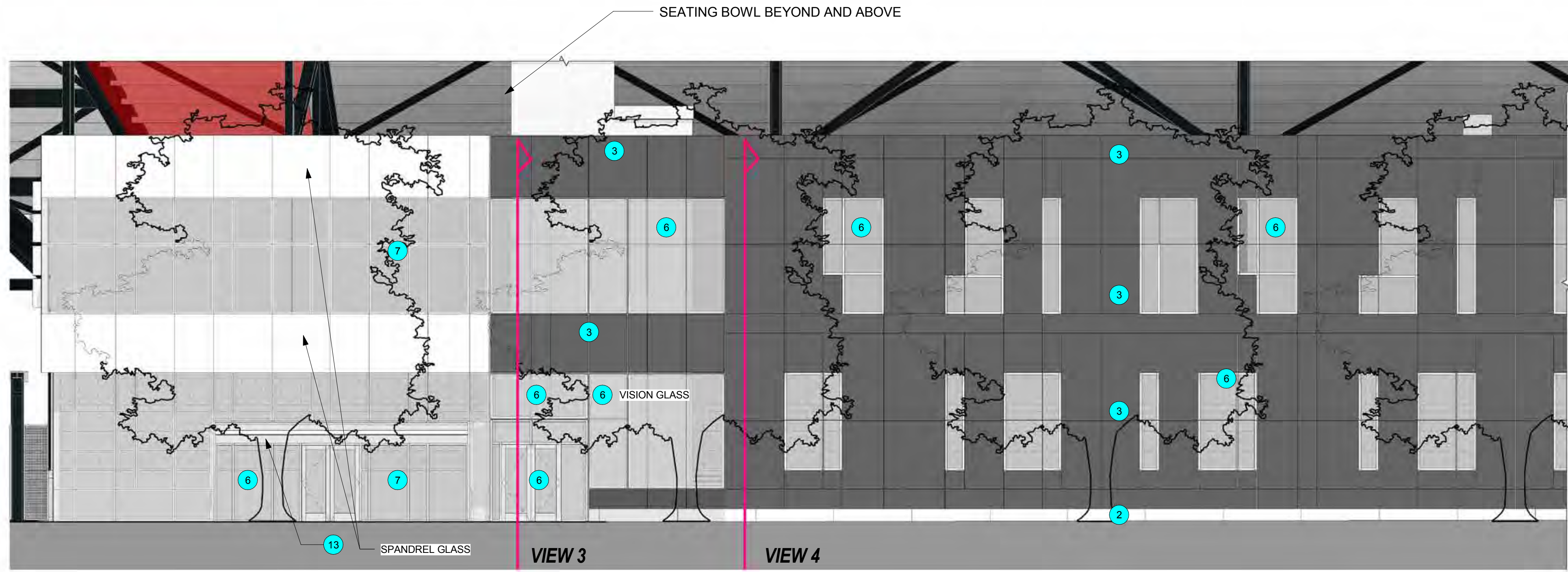




**SOUTHEAST PLAZA & DC UNITED STAFF ENTRY**

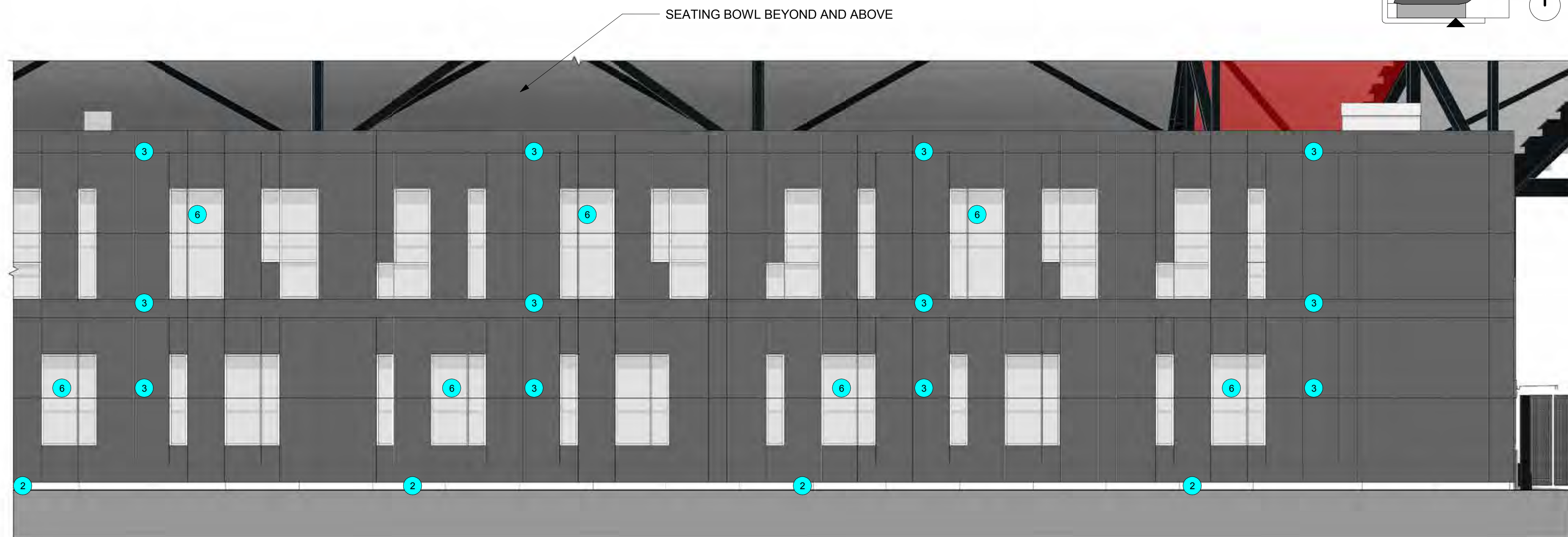




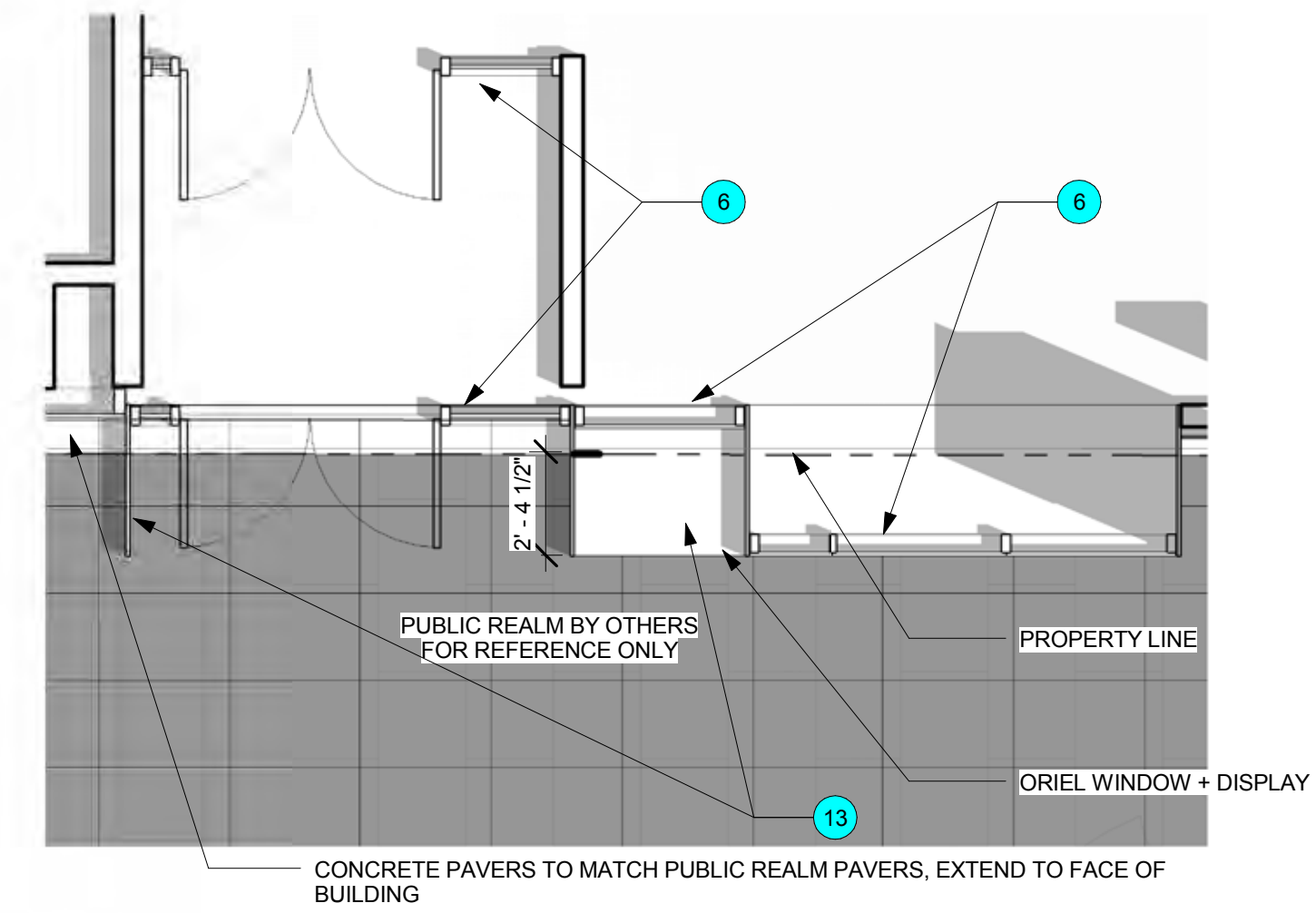


1 T ST - SOUTH STADIUM ELEVATION  
1/8" = 1'-0"

- 1 FORM LINER CIP CONCRETE - WOOD PLANK TEXTURE
- 2 CIP CONCRETE - SMOOTH TEXTURE EXPOSED CONE TIES
- 3 GLASS FIBER REINFORCED CONCRETE PANEL - TYPE 1
- 4 GLASS FIBER REINFORCED CONCRETE PANEL - TYPE 2
- 5 GLASS FIBER REINFORCED CONCRETE PANEL - TYPE 3
- 6 ALUMINUM STOREFRONT W / VISION GLASS
- 7 ALUMINUM CURTAIN WALL W / VISION GLASS
- 8 MP1 CORRUGATED METAL PANEL NATURAL ZINC
- 9 MP2 FLAT INTERLOCKING METAL PANEL NATURAL ZINC
- 10 MP3 CORRUGATED PERFORATED METAL PANEL NATURAL ZINC
- 11 MP4 METAL MESH FENCE @ ENTRY GATES
- 12 MP5 PERFORATED MILL ALUMINUM METAL PANEL - FENCE / SCREEN WALL
- 13 MP6 PANTED STEEL - ENTRY CANOPY, ORIEL WINDOW DISPLAYS, FENCE POSTS, STADIUM STRUCTURAL SUPPORT, MAIN HIGH ROOF CANOPY
- 14 POLYCARBONATE ROOFING
- 15 SIGNAGE, BRANDING, LOGOS + SPONSOR

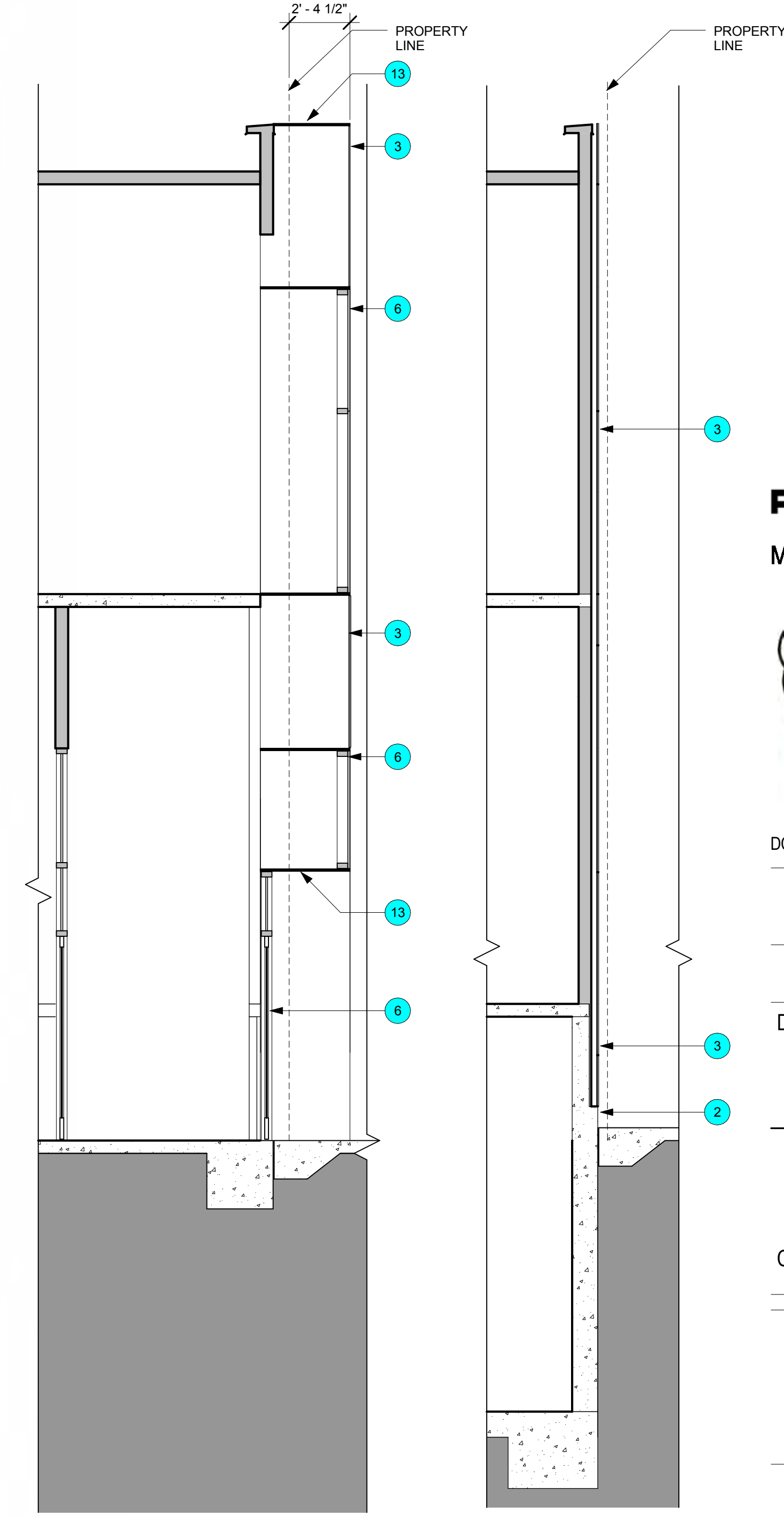


2 T ST - SOUTH STADIUM ELEVATION  
1/8" = 1'-0"



0 2' 4' 8'

5 T ST OFFICE ENTRY PLAN  
1/4" = 1'-0"



0 2' 4' 8'

3 WALL SECTION  
1/4" = 1'-0"

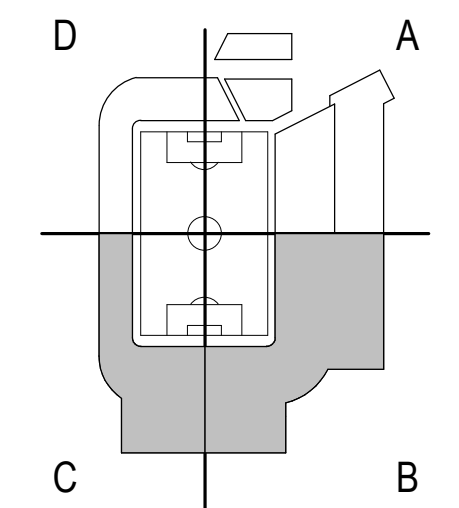
4 WALL SECTION  
1/4" = 1'-0"

**POPULOUS**  
Marshall | Moya Design



DC UNITED SOCCER STADIUM  
100 Potomac Avenue, SW  
Washington, DC 20024

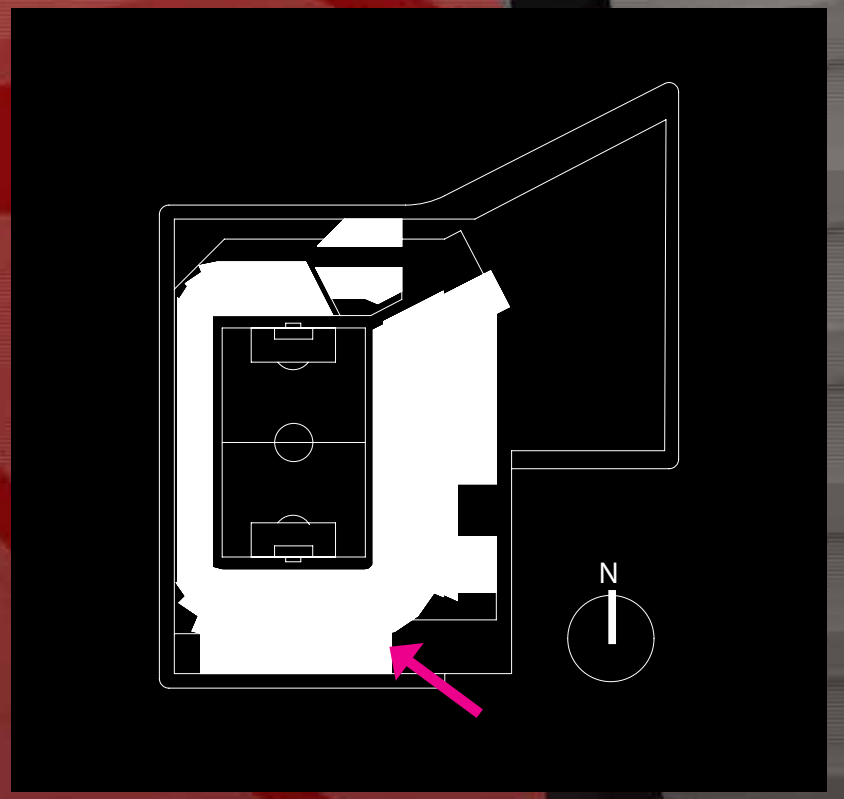
100% PUD SUBMISSION



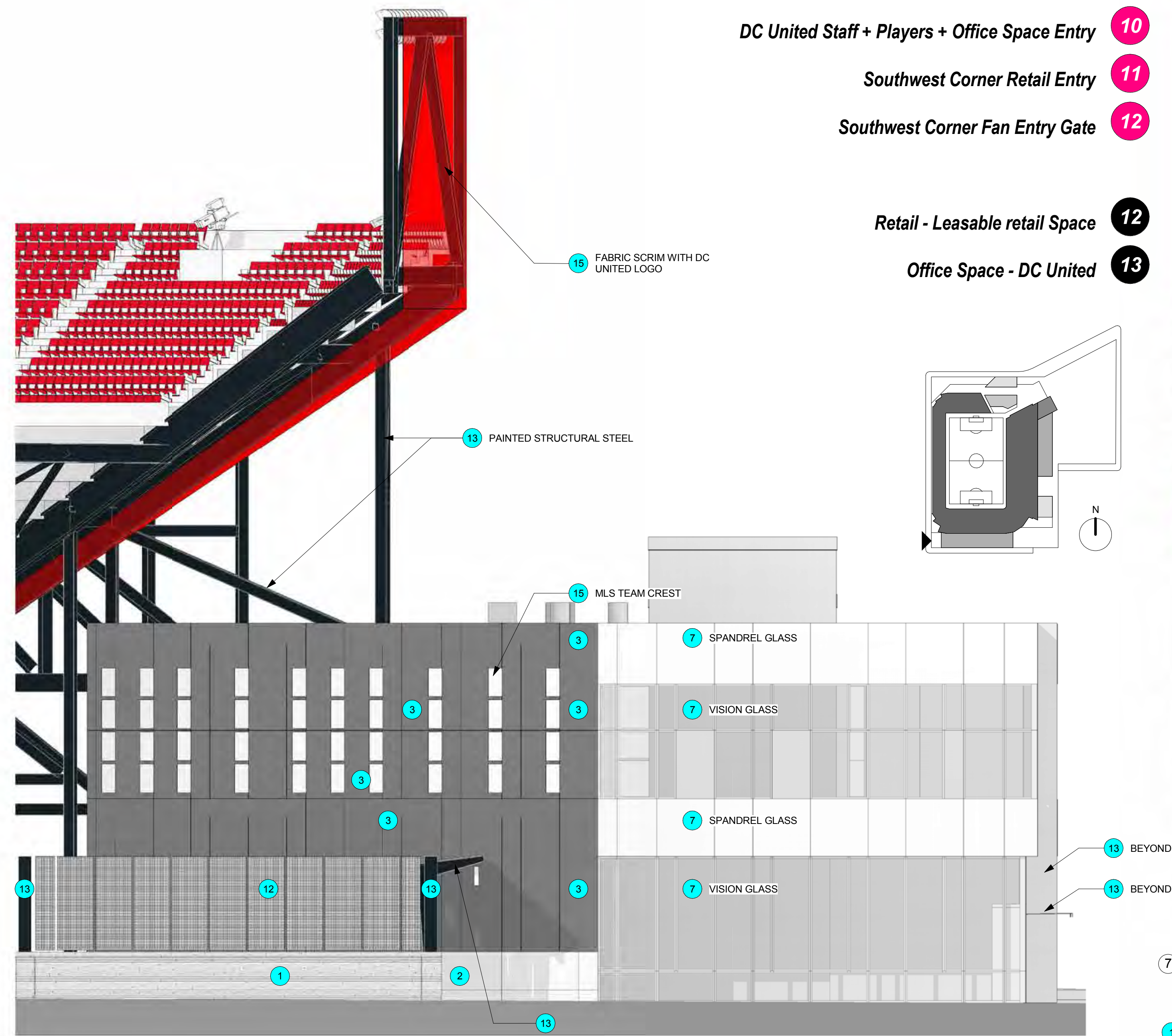
AREA B+C - ELEVATIONS  
& DETAILS



**T ST. & FIRST ST. SOUTHEAST DC UNITED STAFF ENTRY LOOKING WEST**

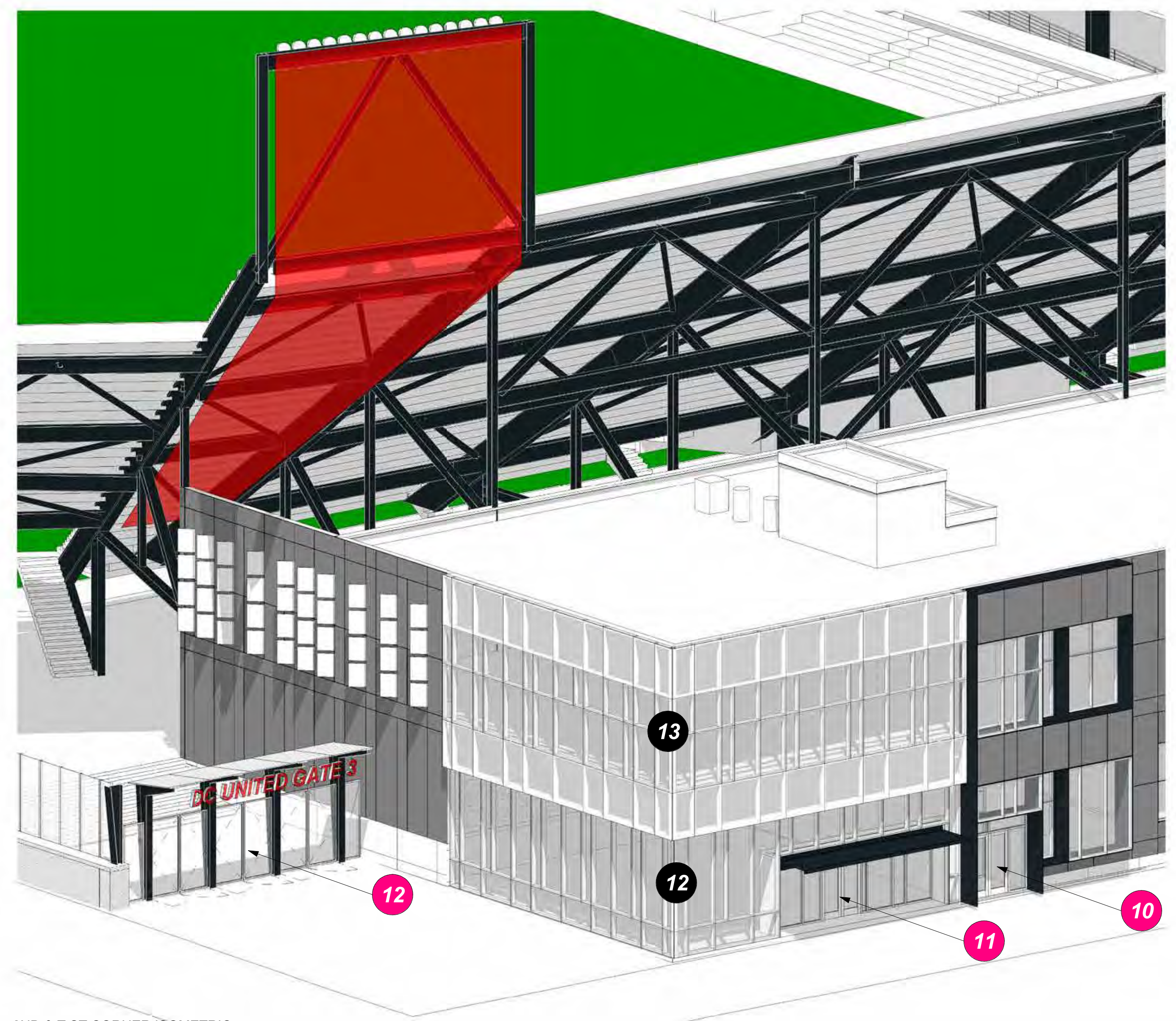






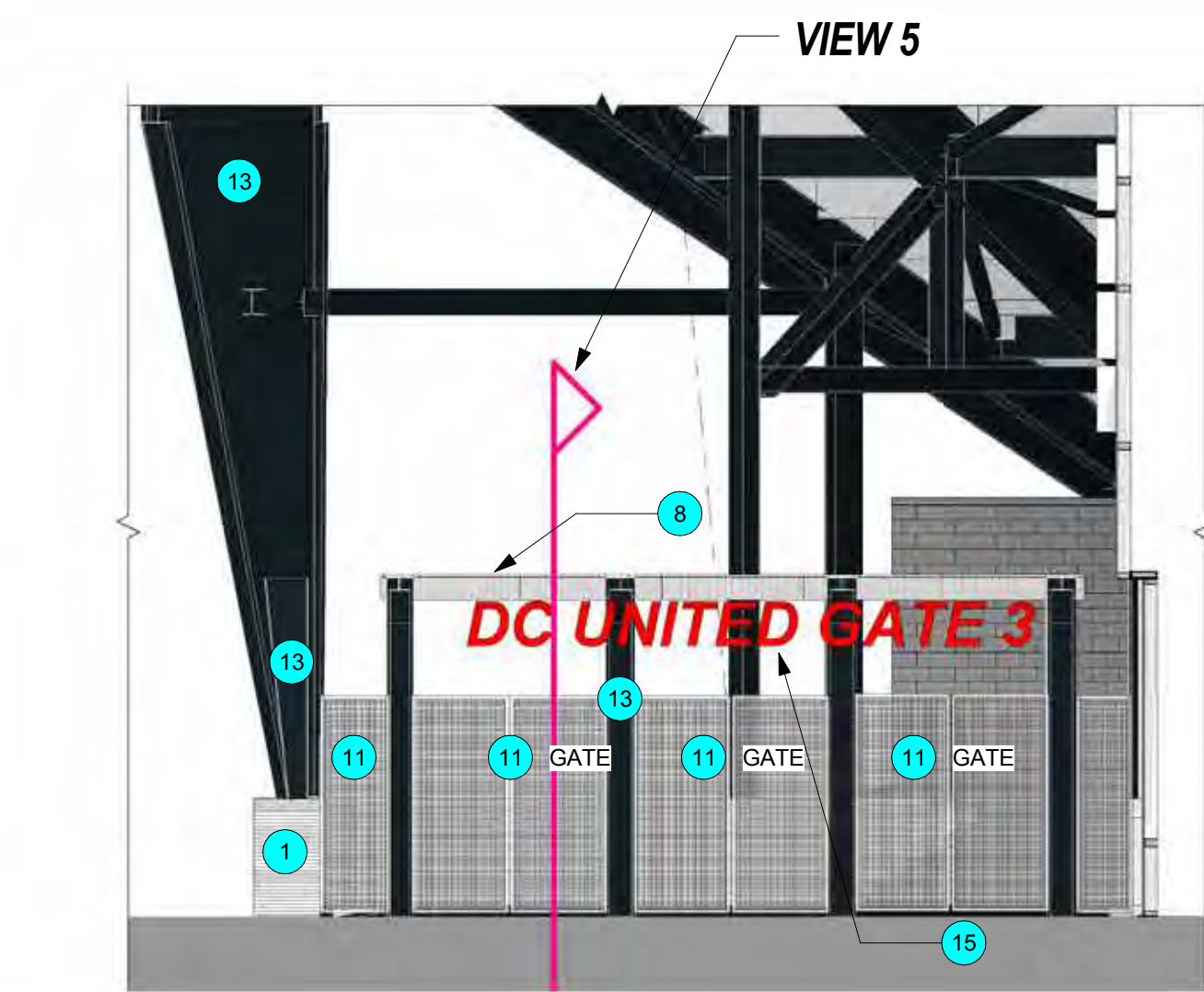
1 2ND & T ST CORNER ELEVATION  
1/8" = 1'-0"

**EXTERIOR MATERIALS SIZES AND ORIENTATION ARE AT SCHEMATIC DESIGN LEVEL, PANEL SIZE AND ORIENTATION MAY CHANGE FOR CONSTRUCTABILITY AND PROGRESS IN DESIGN**



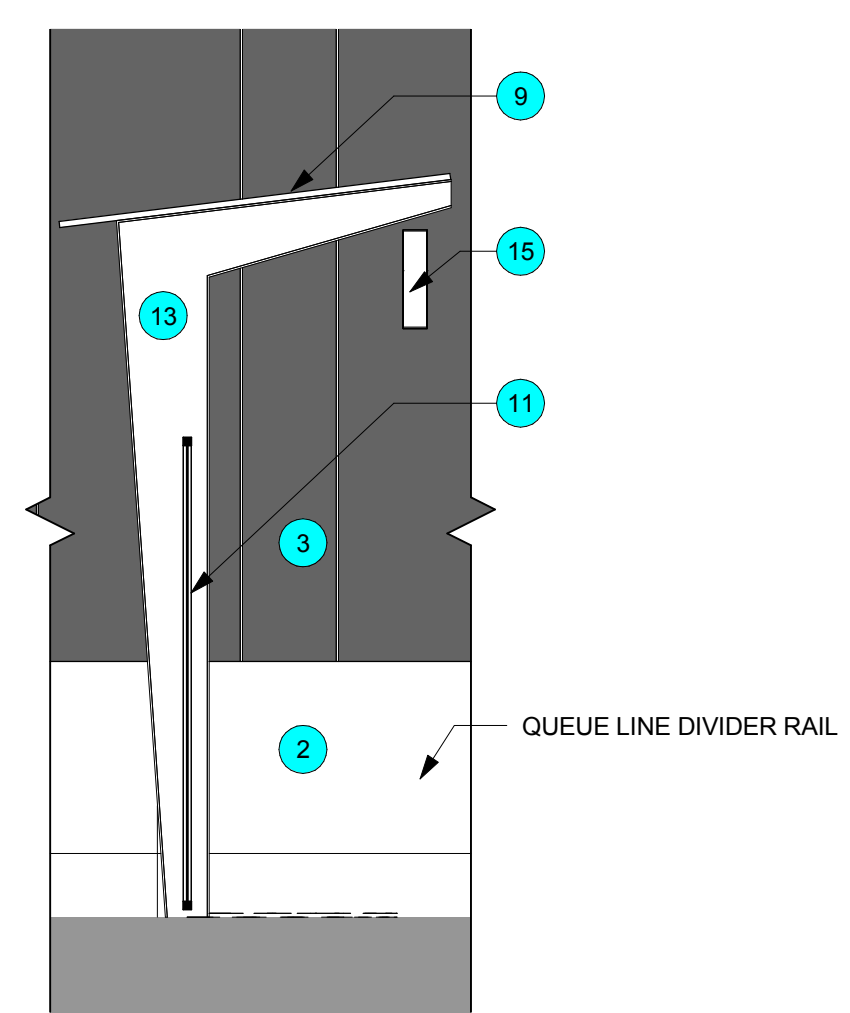
7 2ND & T ST CORNER ISOMETRIC

- 1 FORM LINER CIP CONCRETE - WOOD PLANK TEXTURE
- 2 CIP CONCRETE - SMOOTH TEXTURE EXPOSED CONE TIES
- 3 GLASS FIBER REINFORCED CONCRETE PANEL - TYPE 1
- 4 GLASS FIBER REINFORCED CONCRETE PANEL - TYPE 2
- 5 GLASS FIBER REINFORCED CONCRETE PANEL - TYPE 3
- 6 ALUMINUM STOREFRONT W / VISION GLASS
- 7 ALUMINUM CUTAIN WALL W / VISION GLASS
- 8 MP1 CORRUGATED METAL PANEL NATURAL ZINC
- 9 MP2 FLAT INTERLOCKING METAL PANEL NATURAL ZINC
- 10 MP3 CORRUGATED PERFORATED METAL PANEL NATURAL ZINC
- 11 MP4 METAL MESH FENCE @ ENTRY GATES
- 12 MP5 PERFORATED MILL ALUMINUM METAL PANEL - FENCE / SCREEN WALL
- 13 MP6 PAINTED STEEL - ENTRY CANOPY, ORIEL WINDOW DISPLAYS, FENCE POSTS, STADIUM STRUCTURAL SUPPORT, MAIN HIGH ROOF CANOPY
- 14 POLYCARBONATE ROOFING
- 15 SIGNAGE, BRANDING, LOGOS + SPONSOR



4 SOUTHWEST ENTRY GATE ELEVATION  
1/8" = 1'-0"

**SIGNAGE IS FOR ILLUSTRATION AND LOCATION IDENTIFICATION ONLY, CONTENT SUBJECT TO CHANGE**



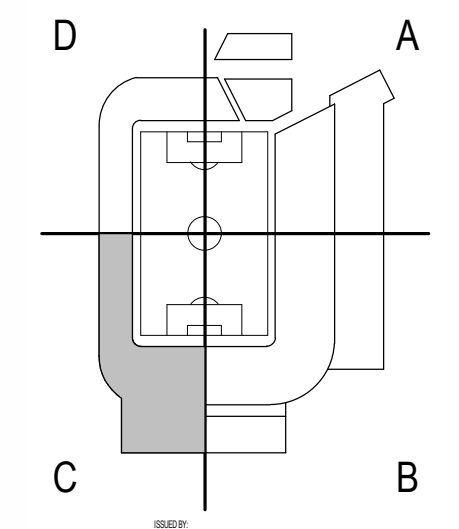
5 CANOPY SECTION  
1/4" = 1'-0"

**POPULOUS**  
Marshall Moya Design



DC UNITED SOCCER STADIUM  
100 Potomac Avenue, SW  
Washington, DC 20024

100% PUD SUBMISSION



AREA C - ELEVATIONS & DETAILS

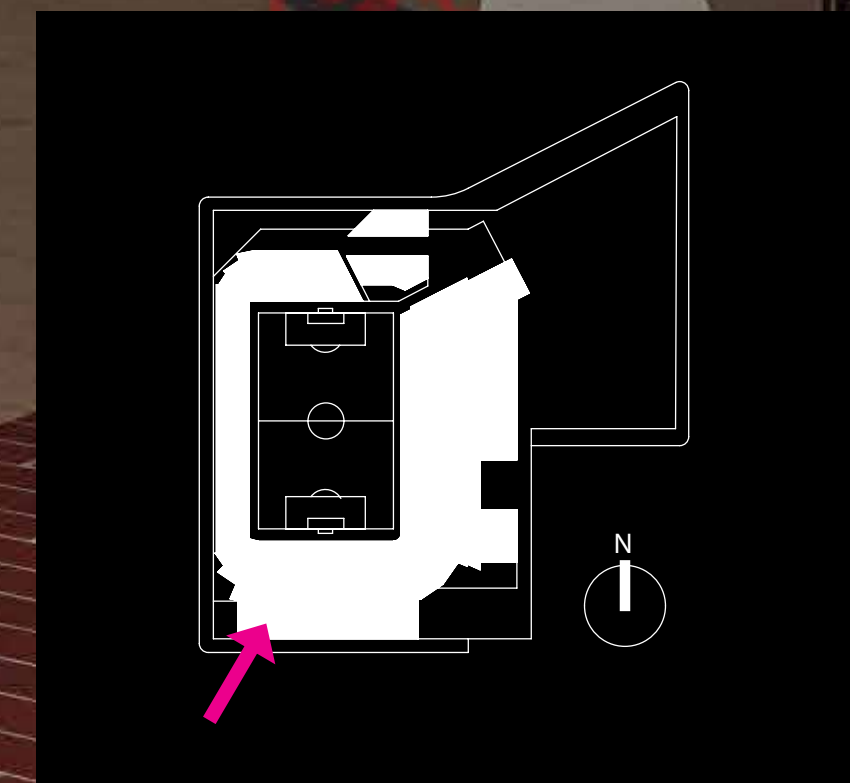




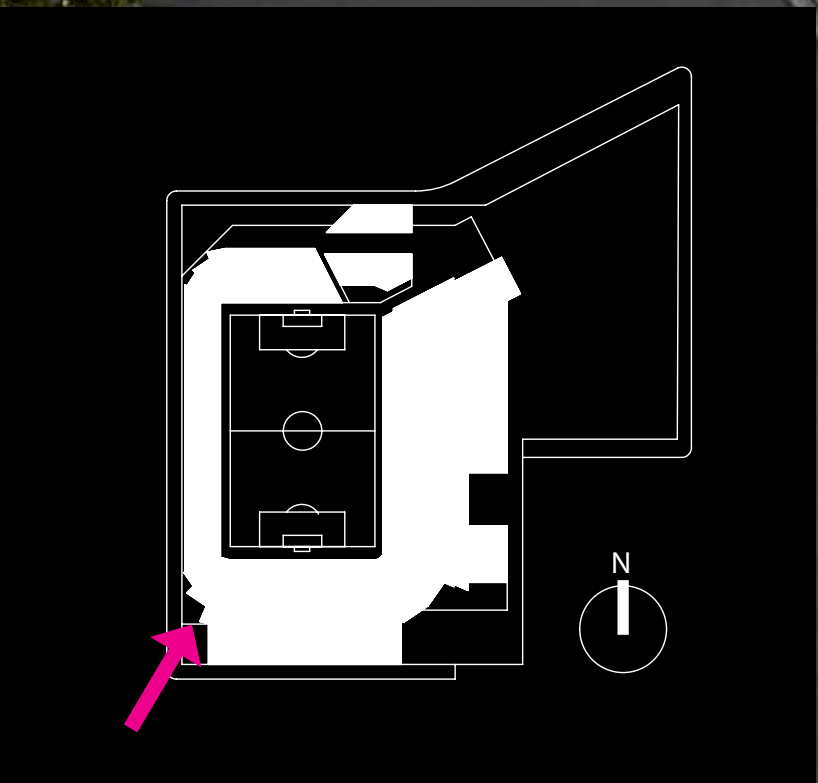
GATE 3



**SOUTH BUILDING ENTRY RENDERING**







**SOUTHWEST AERIAL RENDERING**

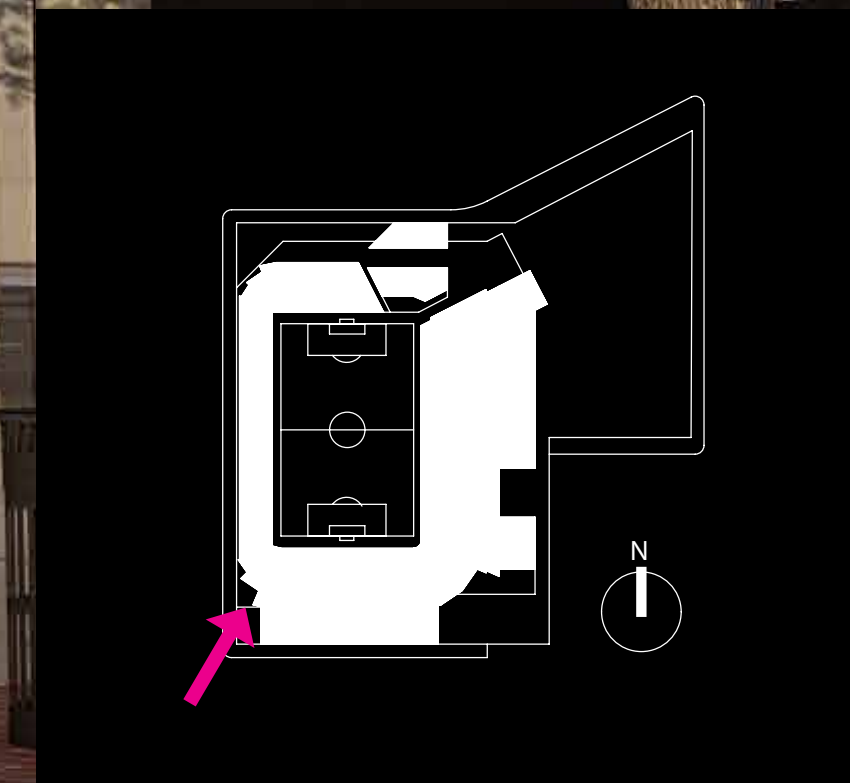


D.C. UNITED™

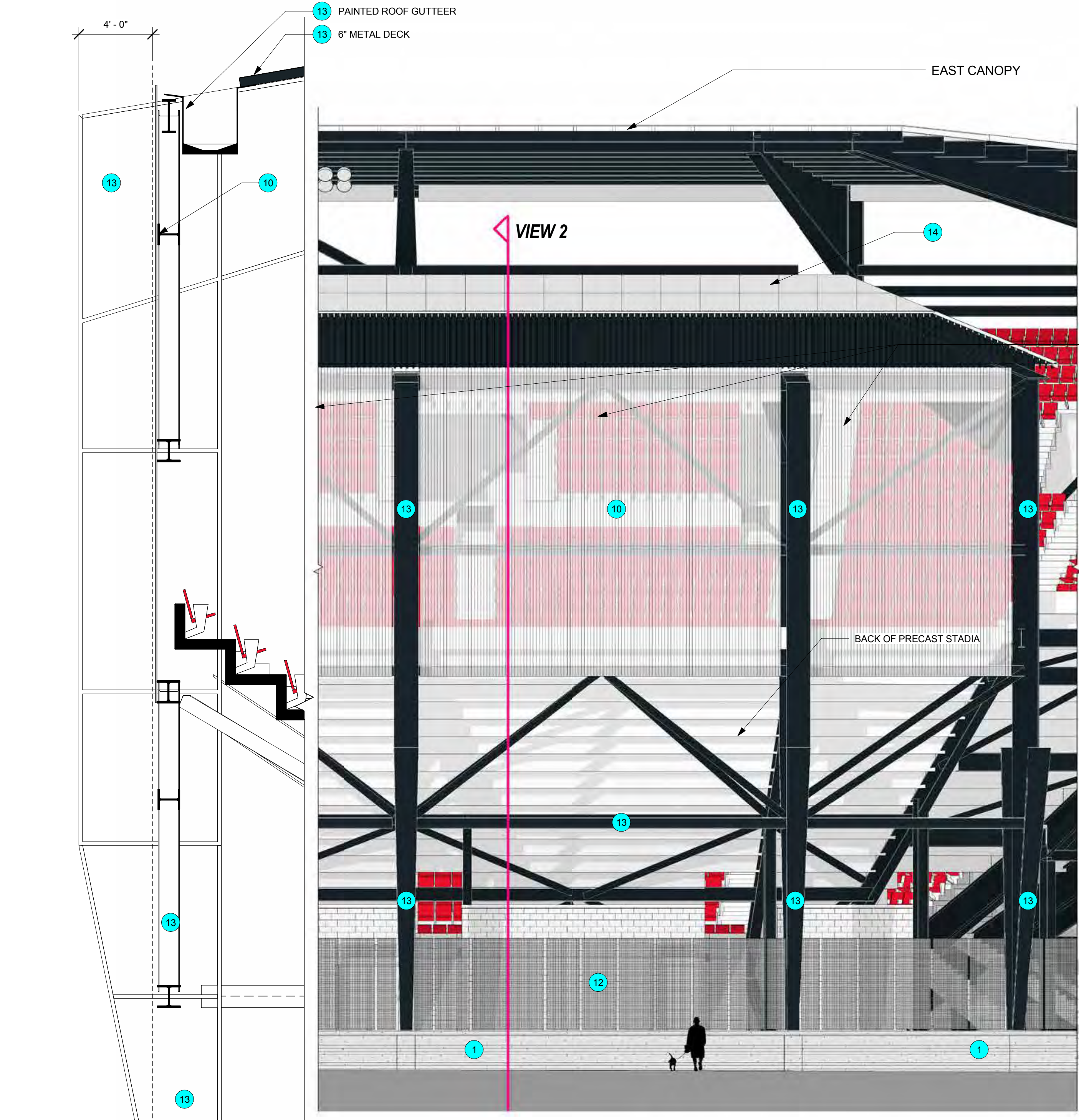


DC UNITED GATE 3

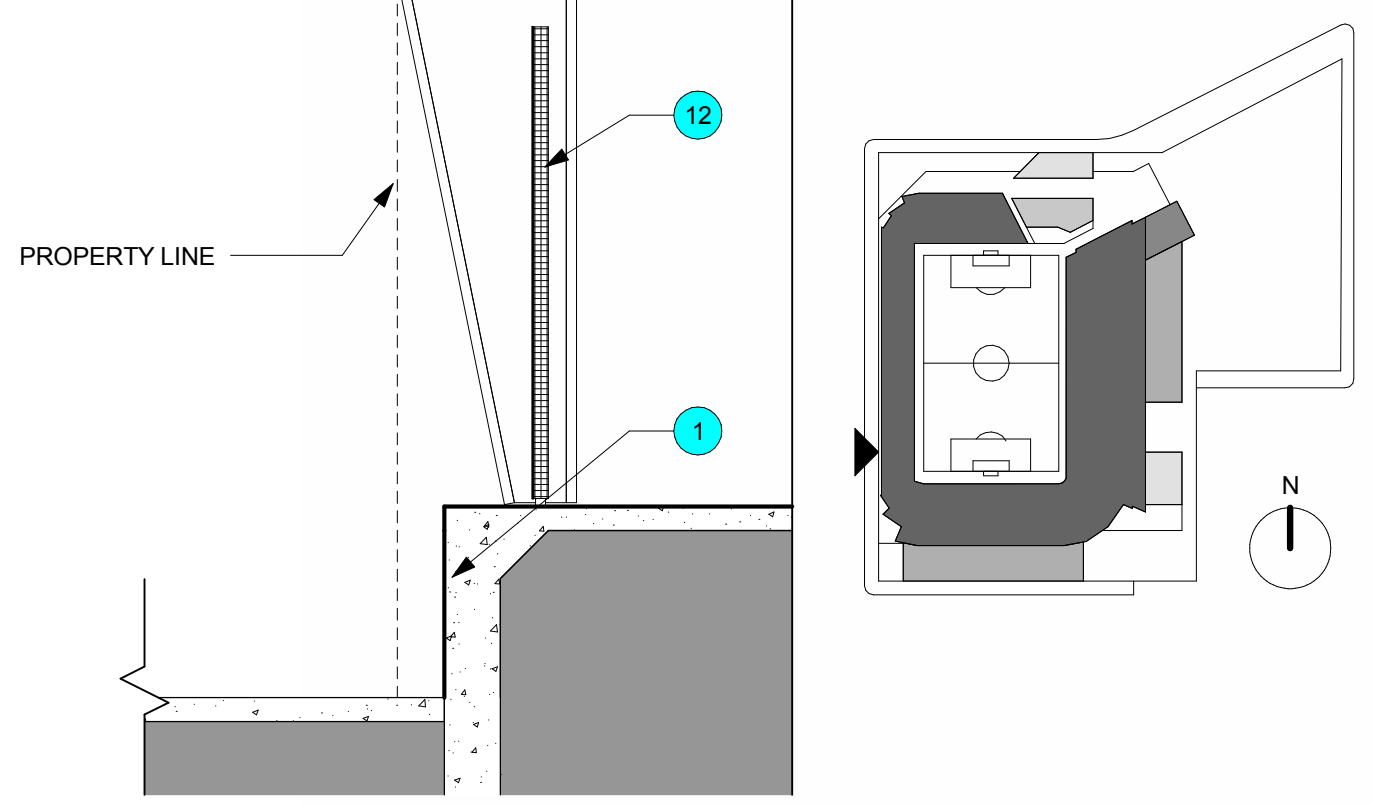
SOUTHWEST FAN ENTRY



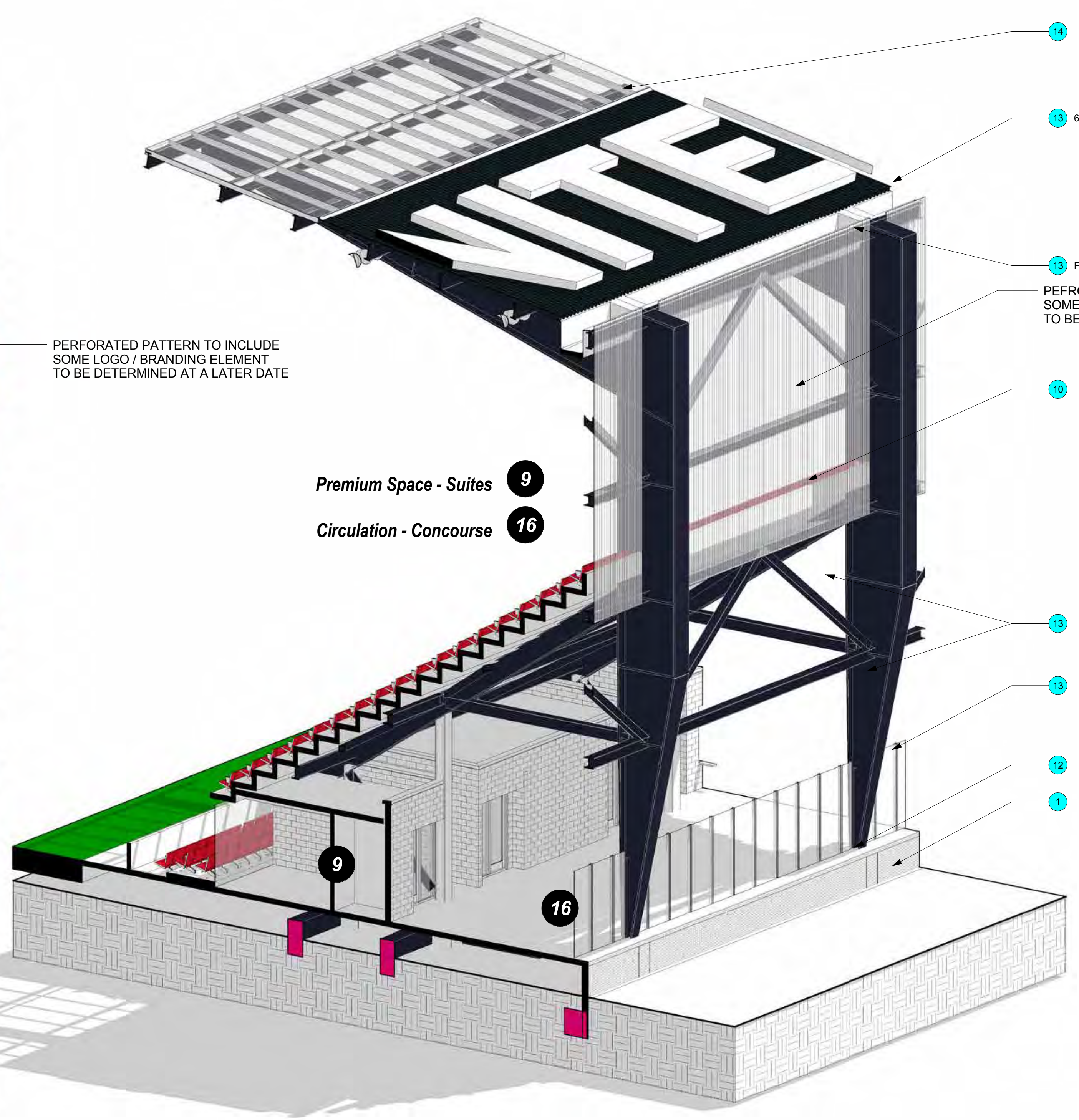




1 1ST STREET TYPICAL ELEVATION  
1/8" = 1'-0"



2 WALL SECTION  
1/4" = 1'-0"



3 2ND STREET ISOMETRIC VIEW

**EXTERIOR MATERIALS SIZES AND ORIENTATION ARE AT SCHEMATIC DESIGN LEVEL, PANEL SIZE AND ORIENTATION MAY CHANGE FOR CONSTRUCTABILITY AND PROGRESS IN DESIGN**

- 1 FORM LINER CIP CONCRETE - WOOD PLANK TEXTURE
- 2 CIP CONCRETE - SMOOTH TEXTURE EXPOSED CONE TIES
- 3 GLASS FIBER REINFORCED CONCRETE PANEL - TYPE 1
- 4 GLASS FIBER REINFORCED CONCRETE PANEL - TYPE 2
- 5 GLASS FIBER REINFORCED CONCRETE PANEL - TYPE 3
- 6 ALUMINUM STOREFRONT W / VISION GLASS
- 7 ALUMINUM CURTAIN WALL W / VISION GLASS
- 8 MP1 CORRUGATED METAL PANEL NATURAL ZINC
- 9 MP2 FLAT INTERLOCKING METAL PANEL NATURAL ZINC
- 10 MP3 CORRUGATED PERFORATED METAL PANEL NATURAL ZINC
- 11 MP4 METAL MESH FENCE @ ENTRY GATES
- 12 MP5 PERFORATED MILL ALUMINUM METAL PANEL - FENCE / SCREEN WALL
- 13 MP6 PAINTED STEEL - ENTRY CANOPY, ORIEL WINDOW DISPLAYS, FENCE POSTS, STADIUM STRUCTURAL SUPPORT, MAIN HIGH ROOF CANOPY
- 14 POLYCARBONATE ROOFING
- 15 SIGNAGE, BRANDING, LOGOS + SPONSOR

14  
13 6" METAL DECK  
13 PAINTED ROOF GUTTER  
PERFORATED PATTERN TO INCLUDE SOME LOGO / BRANDING ELEMENT TO BE DETERMINED AT A LATER DATE  
10  
13  
13  
12  
1

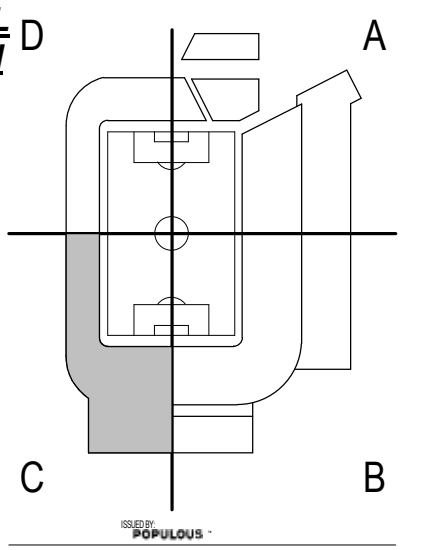
**POPULOUS**  
Marshall Moya Design

DC UNITED SOCCER STADIUM  
100 Potomac Avenue, SW  
Washington, DC 20024  
100% PUD SUBMISSION



DC UNITED SOCCER STADIUM  
100 Potomac Avenue, SW  
Washington, DC 20024

100% PUD SUBMISSION



AREA C - ELEVATIONS & DETAILS